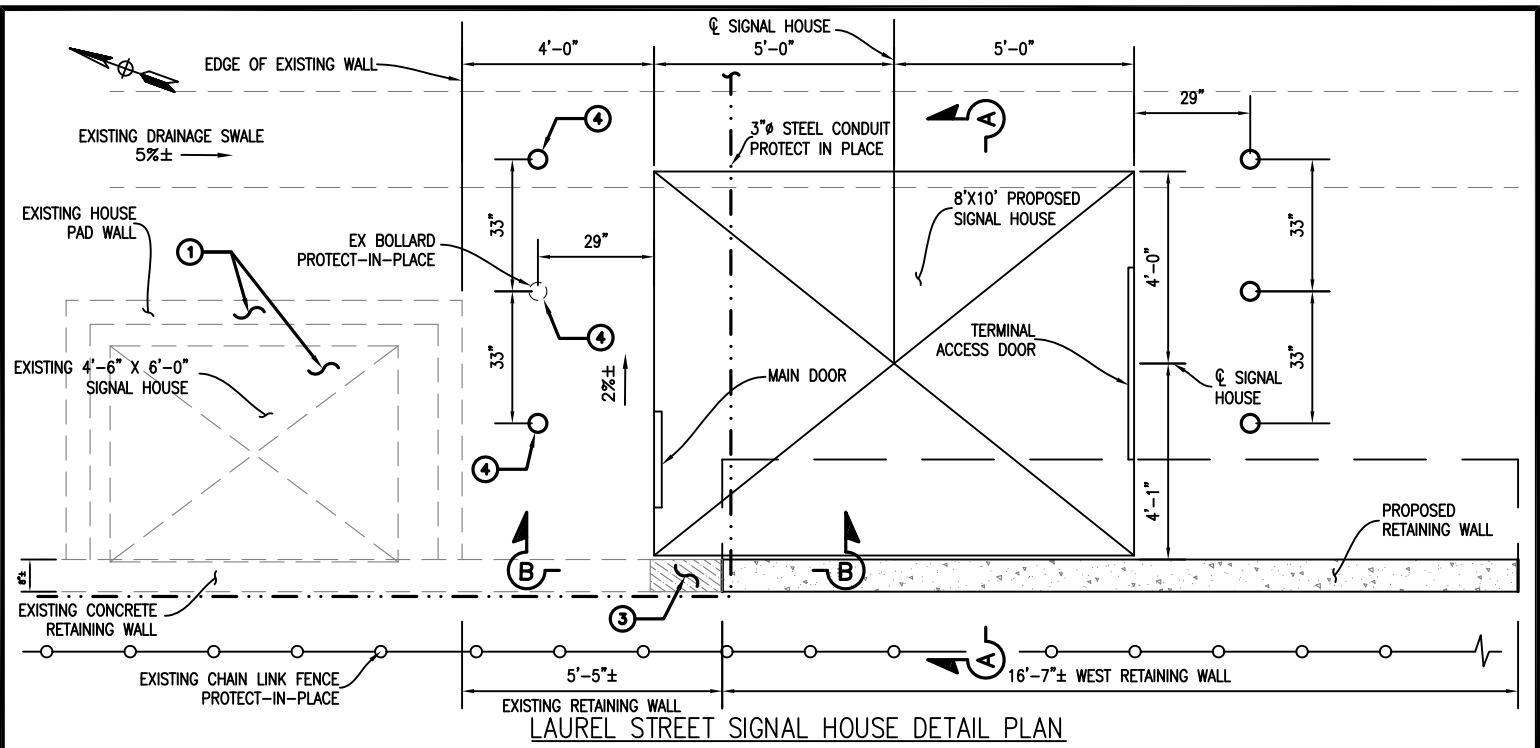


**SUPPLEMENTAL SPECIAL PROVISIONS**

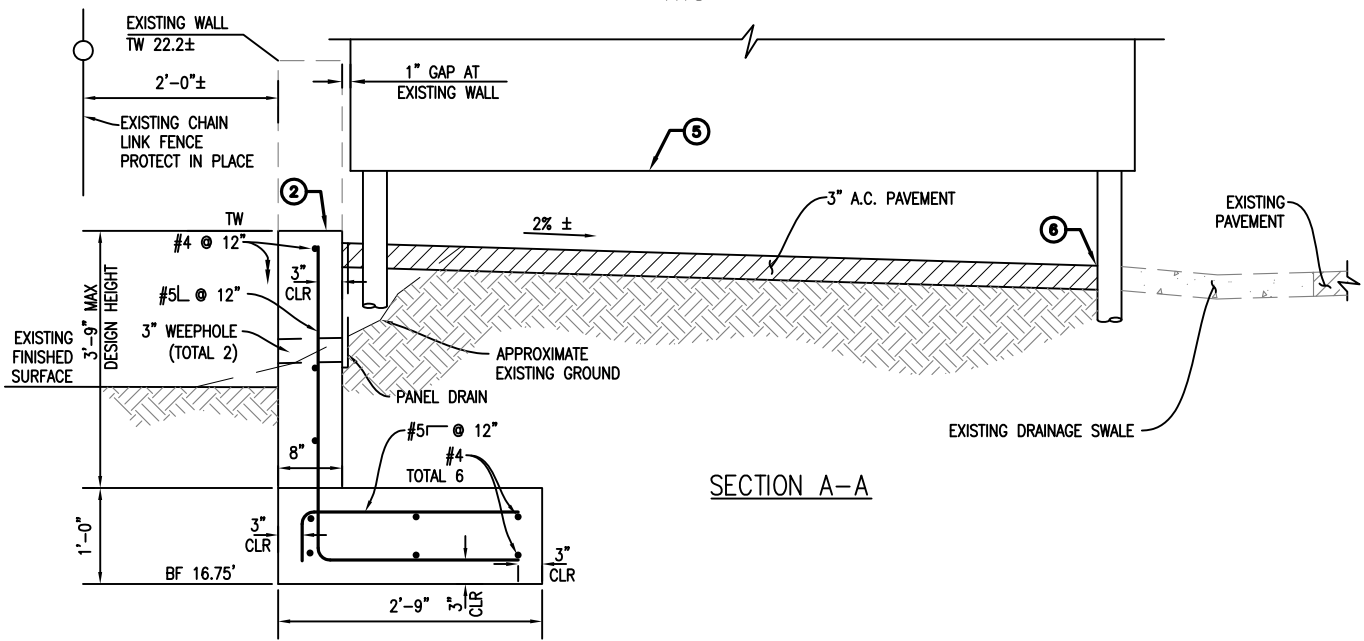
**APPENDIX H**

**RETAINING WALL  
FOR  
LAUREL STREET SIGNAL HOUSE**



LAUREL STREET SIGNAL HOUSE DETAIL PLAN

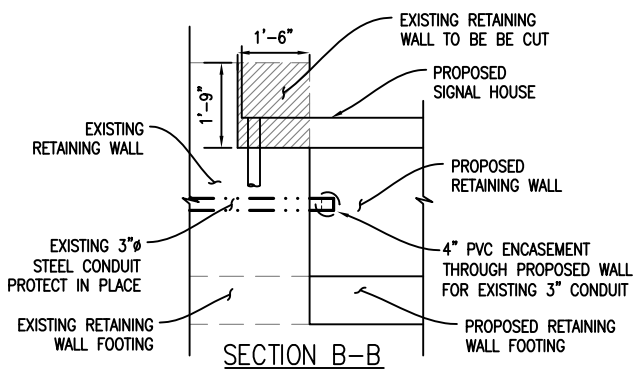
NTS



SECTION A-A

**SIGNAL HOUSE CONSTRUCTION NOTES:**

- ① PROTECT IN PLACE UNTIL NEW SIGNAL HOUSE IS IN PLACE, THEN DEMOLISH AND REMOVE.
- ② CONSTRUCT TOP OF WALL ELEVATION TO BE 2" HIGHER THAN ADJACENT NEW PAVEMENT.
- ③ CUT DOWN EXISTING WALL TO BE 2" ABOVE ADJACENT PAVING AT PROPOSED SIGNAL HOUSE ONLY.
- ④ CONSTRUCT BOLLARDS ON EACH SIDE OF THE SIGNAL HOUSE (5 PROPOSED, 1 EXISTING).
- ⑤ INSTALL BOTTOM OF SIGNAL HOUSE 12" ABOVE FINISHED GRADE.
- ⑥ MATCH EXISTING SURFACE AT EXISTING DRAINAGE SWALE.



SECTION B-B

CCDC CONTRACT



PLANS FOR THE CONSTRUCTION OF:  
 DOWNTOWN SAN DIEGO QUIET ZONE  
 LAUREL STREET SIGNAL HOUSE DETAIL

**RAILPROS INC.**  
 25 MAUCHLY DRIVE, SUITE 329  
 IRVINE, CA 92618  
 WWW.RAILPROS.COM  
 E-MAIL: INFO@RAILPROS.COM  
 PHONE: (714) 734-8766  
 FAX: (714) 734-8755

CITY OF SAN DIEGO, CALIFORNIA  
 ENGINEERING & CAPITAL PROJECTS DEPARTMENT  
 SHEET 1 OF 1 SHEETS

W.O. NO. 421031