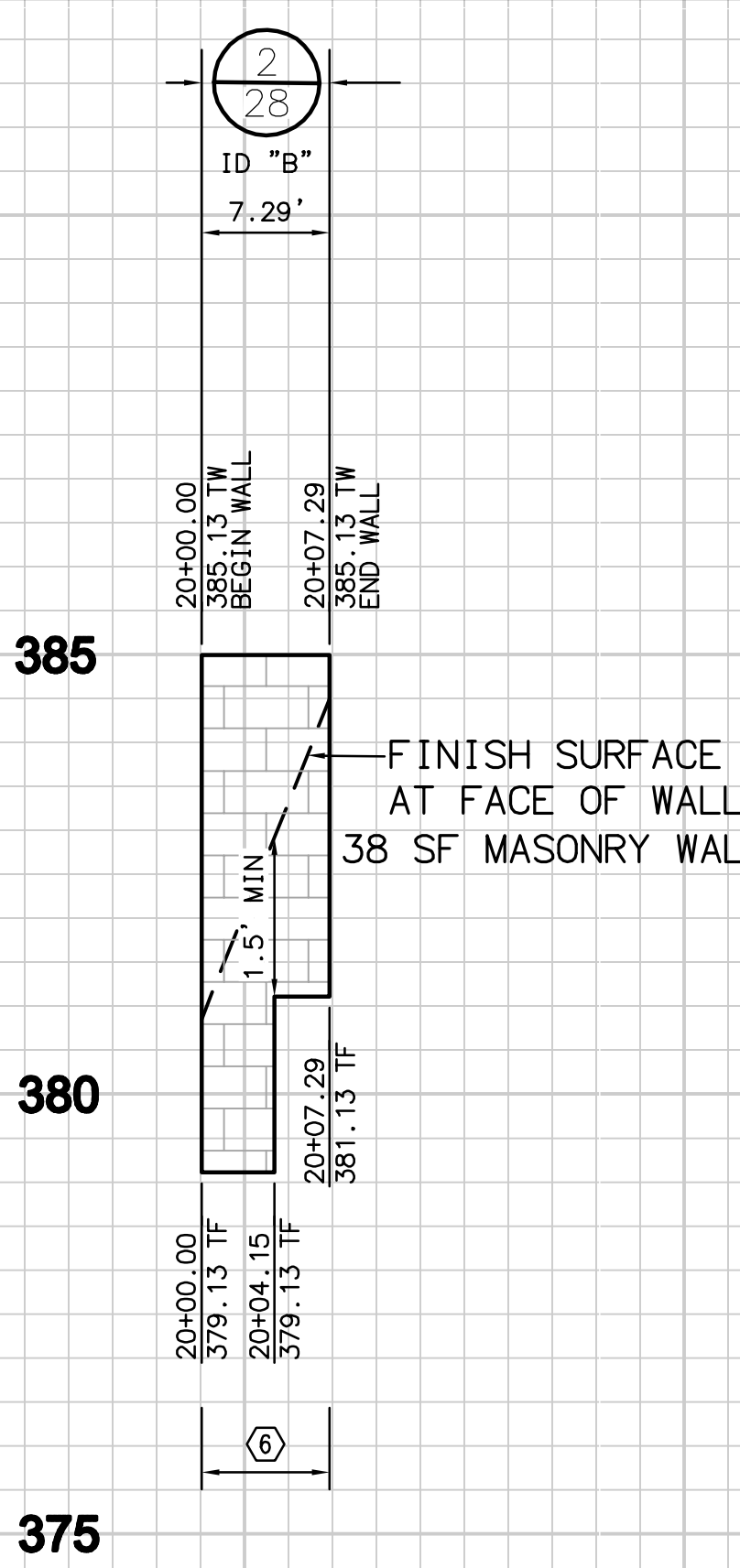
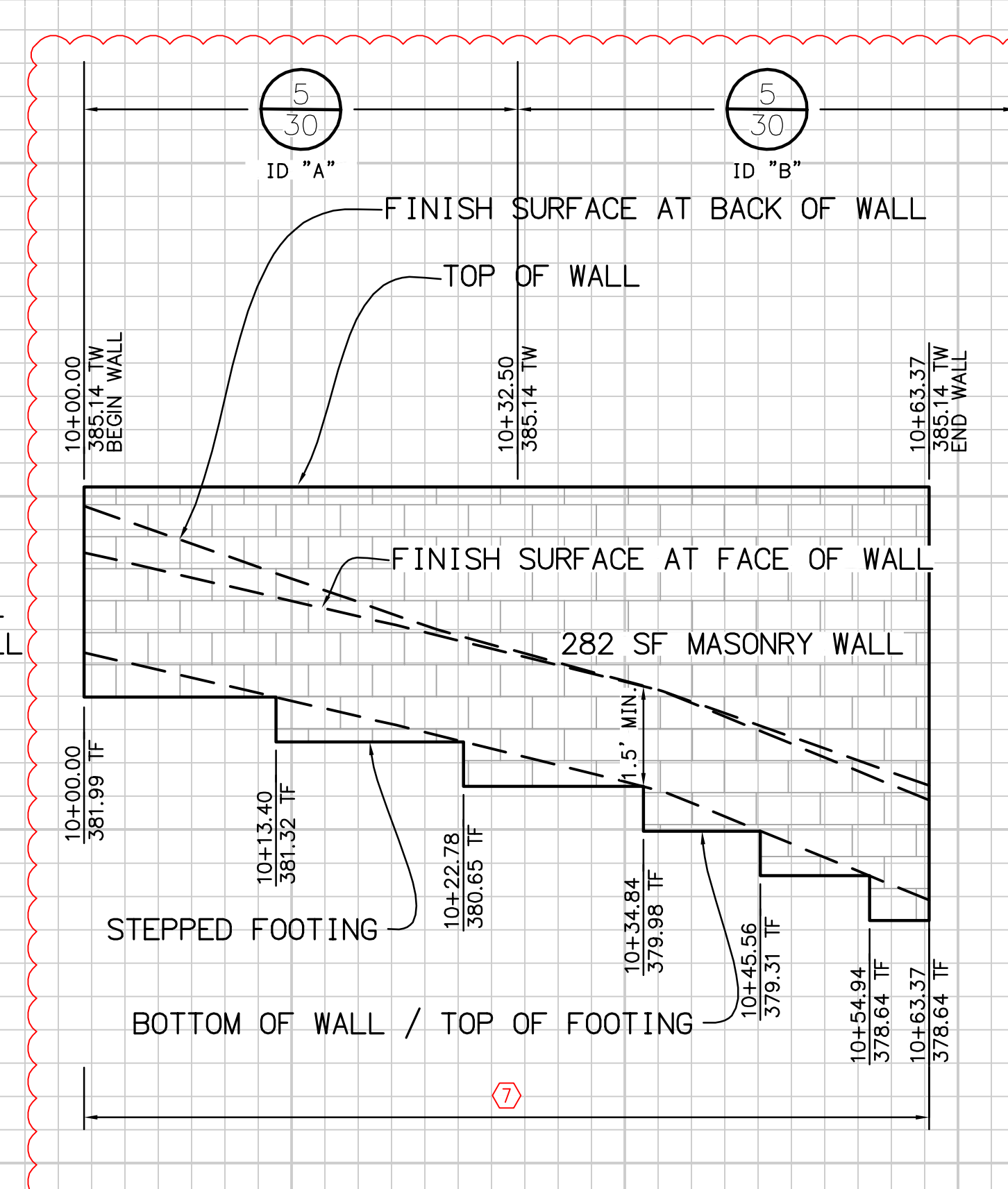


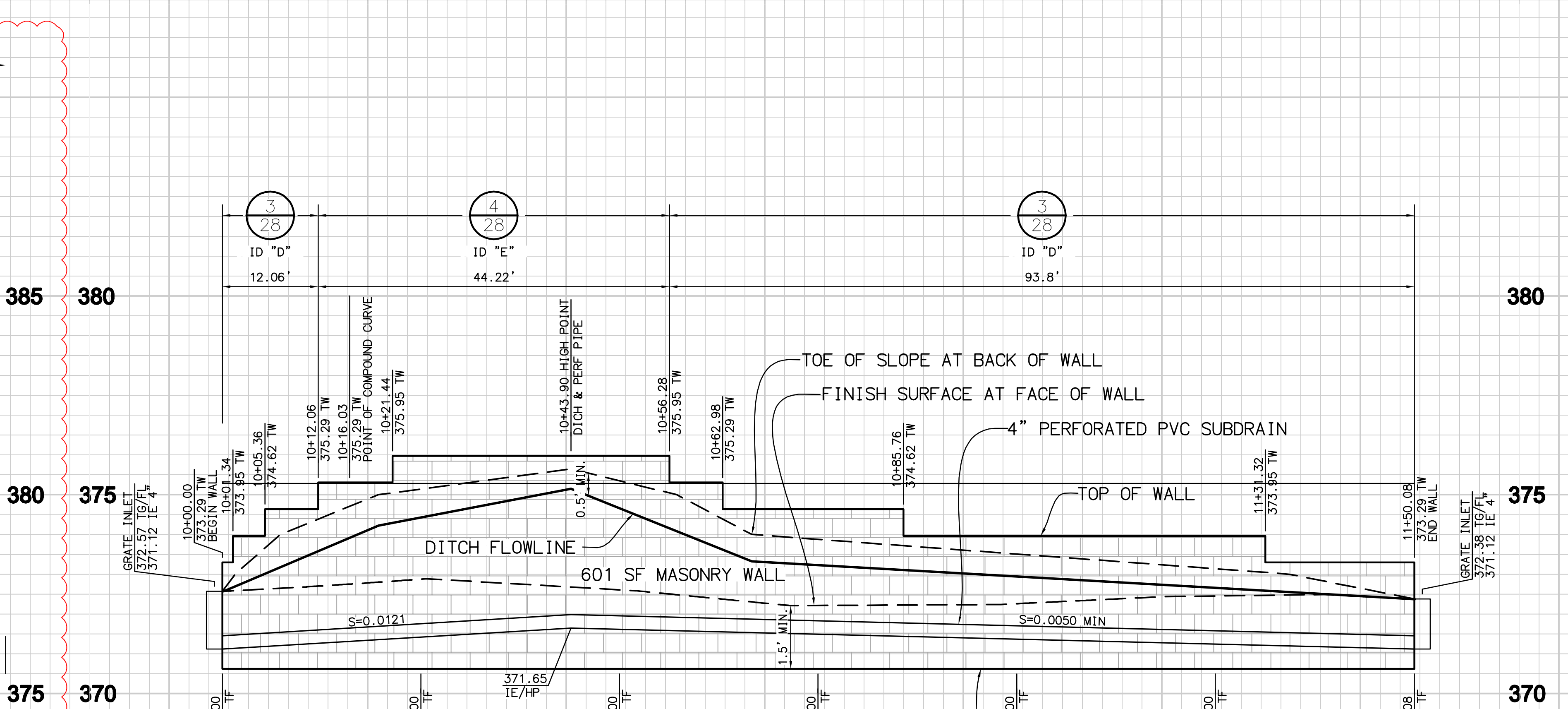
RETAINING WALL PROFILE



RETAINING WALL PROFILE



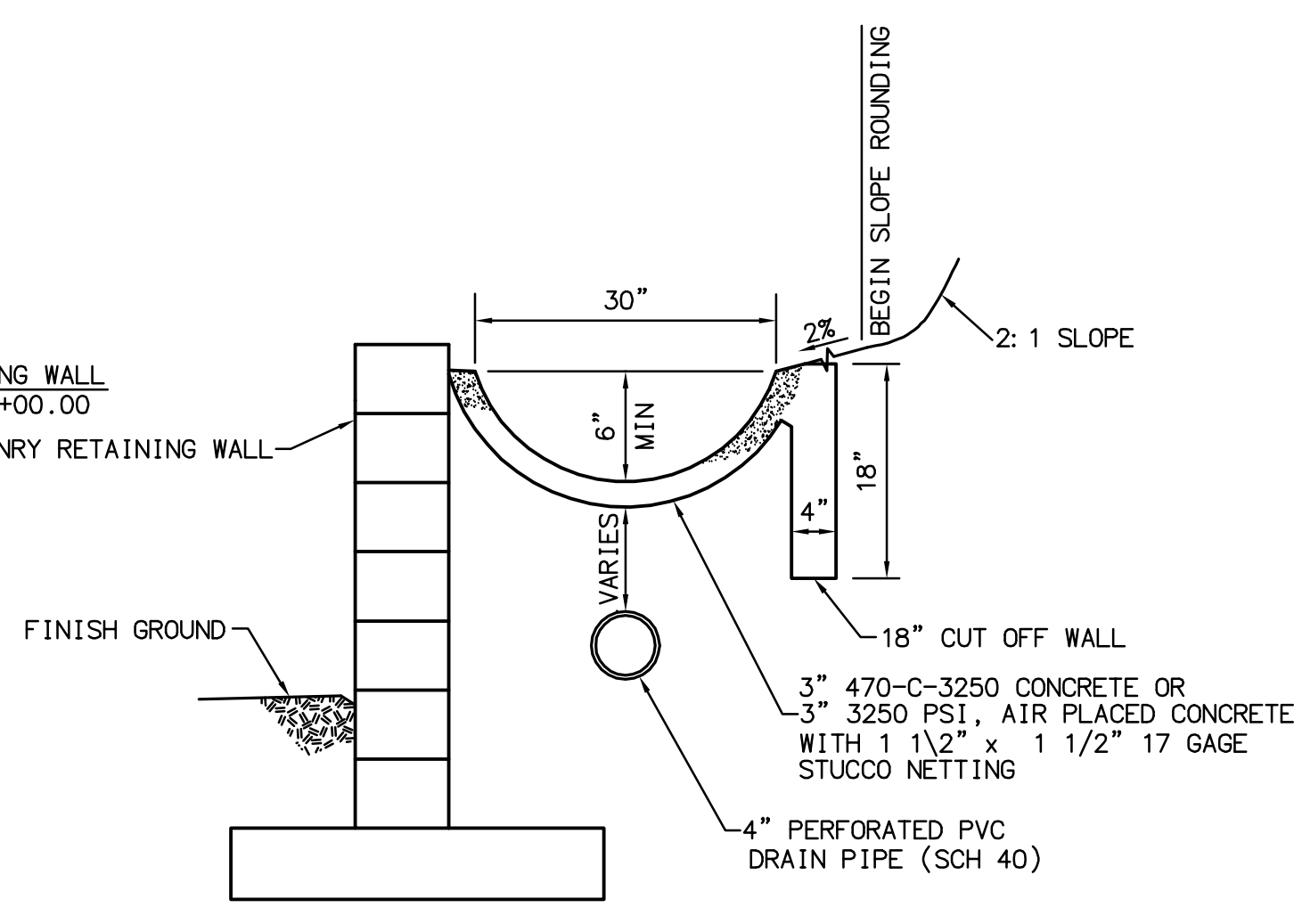
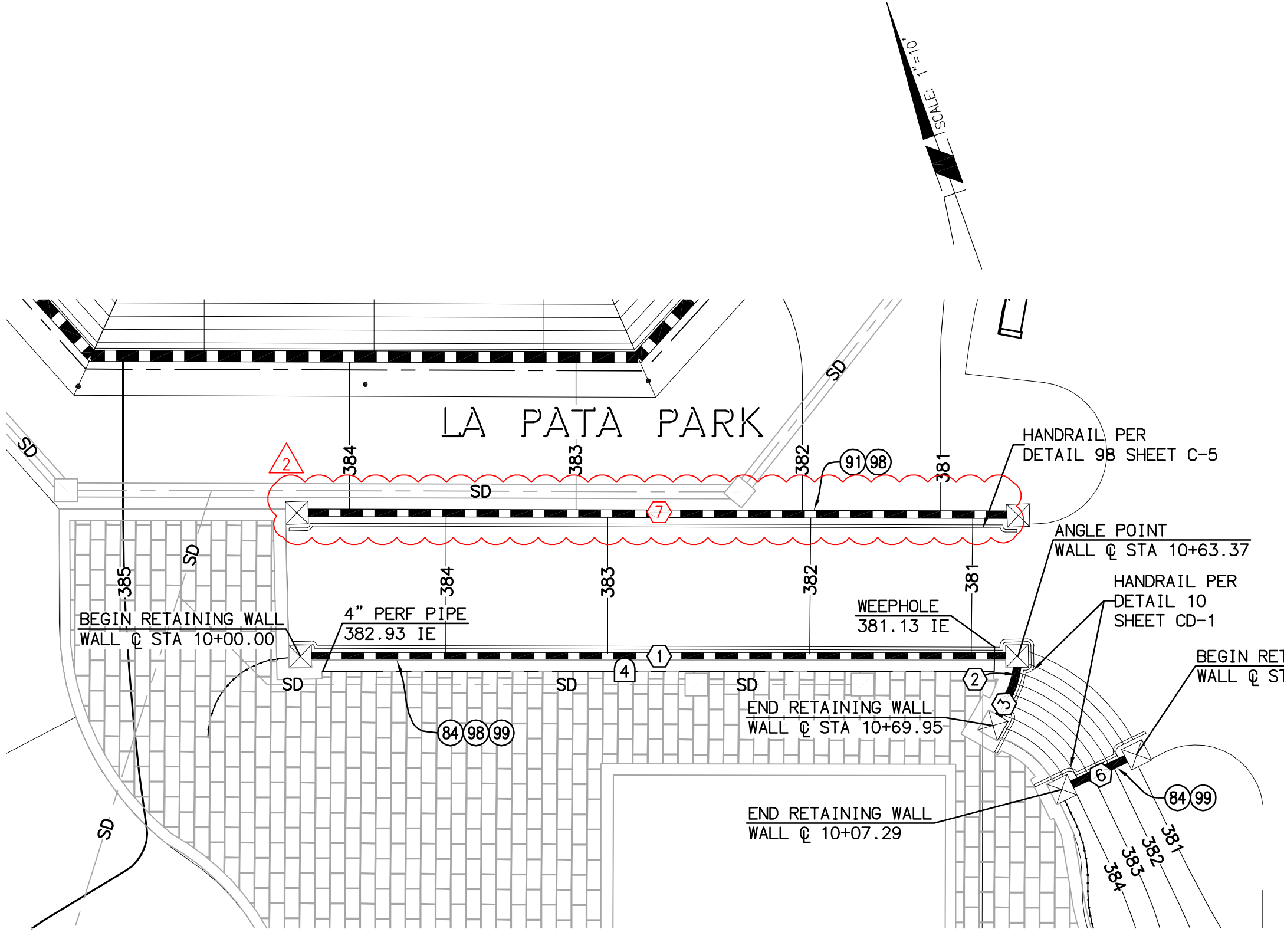
RETAINING WALL PROFILE



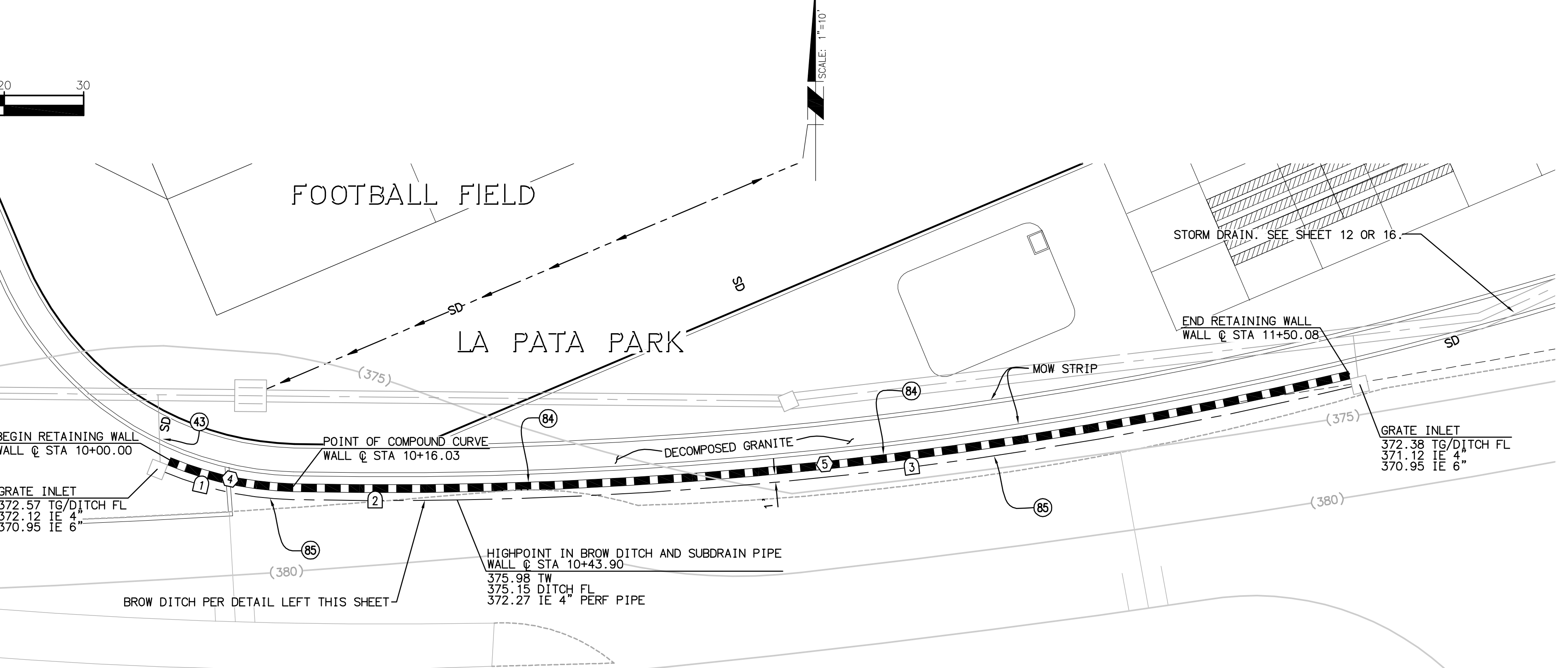
RETAINING WALL PROFILE

PROFILE SCALE
HORIZ. 1" = 10'
VERT. 1" = 2'

10+00 10+50 20+00 10+00 10+50 11+00 11+50



BROW DITCH DETAIL
NTS



NOTES:
1. FOR PRECISE GRADING PLAN, SEE SHEET 10.

NO	BEARING/DELTA	RADIUS	LENGTH	NOTE
1	N70°20'23"W	---	63.37'	MASONRY WALL W/PIPE HANDRAIL FOR RAMP PER DETAIL 98 ON SHEET C-5 AND PEDESTRIAN PROTECTIVE RAILING PER DETAIL 99 ON SHEET C-5
2	26°43'57"E	7.76'	3.62'	MASONRY WALL W/PEDESTRIAN PROTECTIVE RAILING PER DETAIL 99 ON SHEET C-5
3	N46°30'19"E	---	2.96'	MASONRY WALL
4	21°26'16"	42.84'	16.03'	MASONRY WALL
5	14°43'07"	521.83'	134.05'	MASONRY WALL
6	N84°06'34"E	---	5.29'	MASONRY WALL W/PEDESTRIAN PROTECTIVE RAILING PER DETAIL 99 ON SHEET C-5
7	N70°20'23"W	---	63.37'	MASONRY WALL W/PIPE HANDRAIL FOR RAMP PER DETAIL 98 ON SHEET C-5

NO	BEARING/DELTA	RADIUS	LENGTH	NOTE	SLOPE
1	22°42'17"	44.49'	17.63'	4" PERFORATED PVC (SCH 40)	0.0121
2	02°15'48"	523.50'	20.68'	4" PERFORATED PVC (SCH 40)	0.0121
3	12°33'53"	523.50'	114.80'	4" PERFORATED PVC (SCH 40)	0.0050
4	N70°20'22"W	---	59.30'	4" PERFORATED PVC (SCH 40)	0.0300

NOTES:
1. FOR PRECISE GRADING PLAN, SEE SHEET 12 OR 20.
2. FOR STORM DRAIN PLAN, SEE SHEET 15 OR 22.

CONSTRUCTION NOTES

- 1. INSTALL 6" PVC (SCH 40) DRAIN PIPE.
- 2. CONSTRUCT MASONRY RETAINING WALL PER WALL SCHEDULE ON SHEET 32 & DETAILS ON SHEET 30.
- 3. INSTALL 4" PERFORATED PVC (SCH 40) SUBDRAIN PIPE PER DETAIL 1 ON SHEET 30.
- 4. CONSTRUCT FREE-STANDING WALL PER DETAIL 5 ON SHEET S-3.
- 5. INSTALL PIPE HANDRAIL FOR RAMP PER DETAIL 98 ON SHEET C-5.
- 6. INSTALL PEDESTRIAN PROTECTIVE RAILING PIPE GUARDRAIL (POST TYPE) PER DETAIL 99 ON SHEET C-5.

PLANS CHECKED BY: _____ APPROVED BY: _____
AL KING, DIRECTOR OF BEACHES, PARKS, & RECREATION DATE: _____
WILLIAM E. CAMERON, CITY ENGINEER DATE: _____

NO.	DESCRIPTION	REVISED	APPROVED	DATE
1	ADDENDUM 1 - RE-ISSUED PLAN SHEETS 63 - 84.			2/5/10
2	ADDENDUM 3 - PLAN REVISIONS			

JOB NO.: 55-100467
SCALE: AS SHOWN
DESIGNED BY: TB

PLANS PREPARED BY: RBF CONSULTING
5050 AVENIDA ENCINAS, SUITE 200
CARLSBAD, CALIFORNIA 92008-4386
760.476.9900 • FAX 760.476.9998 • www.RBF.com
PREPARED UNDER THE SUPERVISION OF: _____
DATE: _____
R.C.E. # C69815

CITY OF SAN CLEMENTE
DEPARTMENT OF BEACHES, PARKS, & RECREATION
LA PATA PARK
RETAINING WALL PLAN & PROFILE
DRAWING NO.: C-29
SHEET NO.: 29
OF 178

H:\PDATA\55100467\CADD\LAND\DLV\GRADING\PRECISE_467-29-WR.DWG KMAKER 3/2/10 3:36 pm