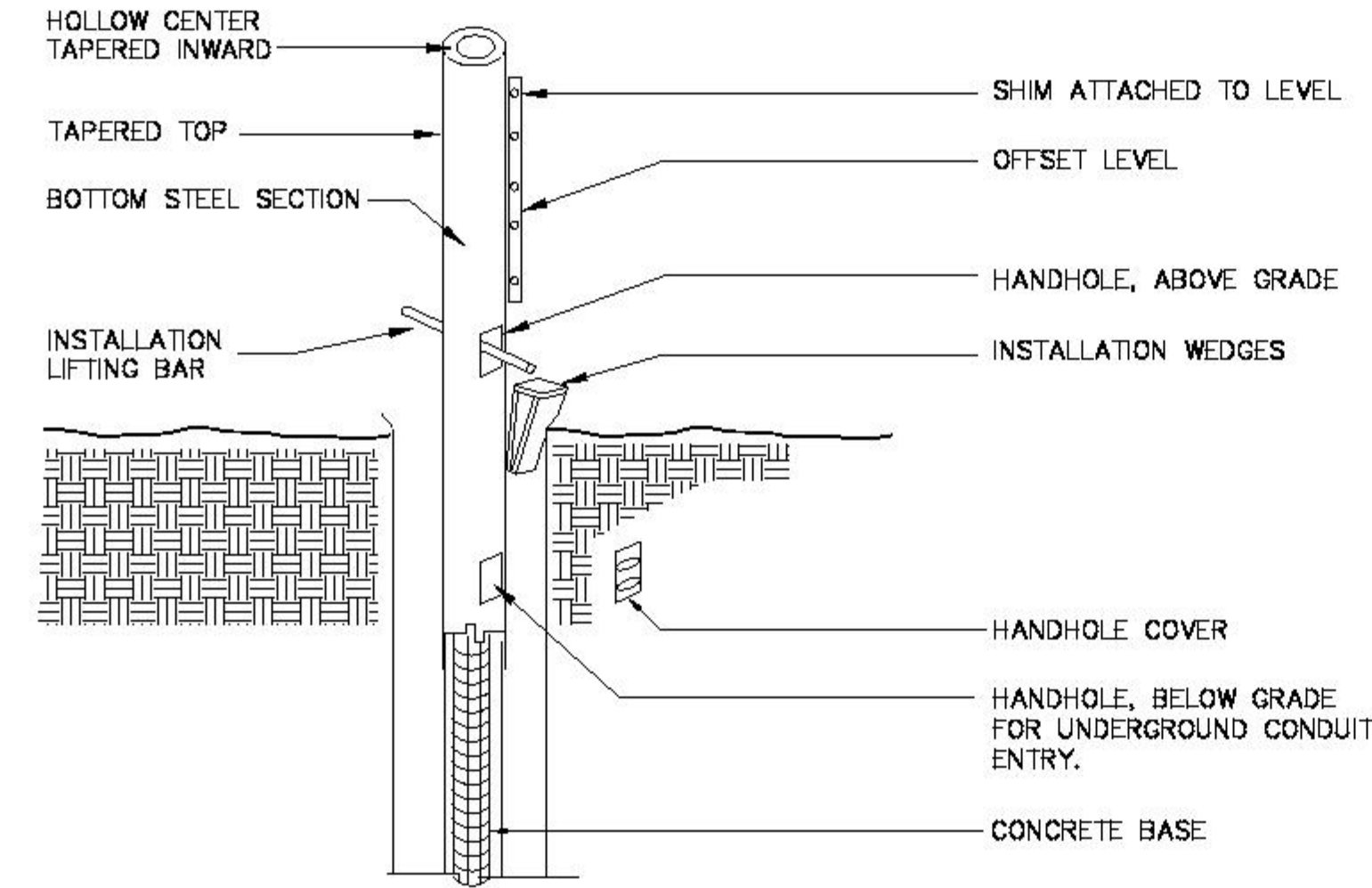


REF. MUSCO SHEETS FOR ADDITIONAL INFO.

POLE FOOTING DETAIL
NO SCALE

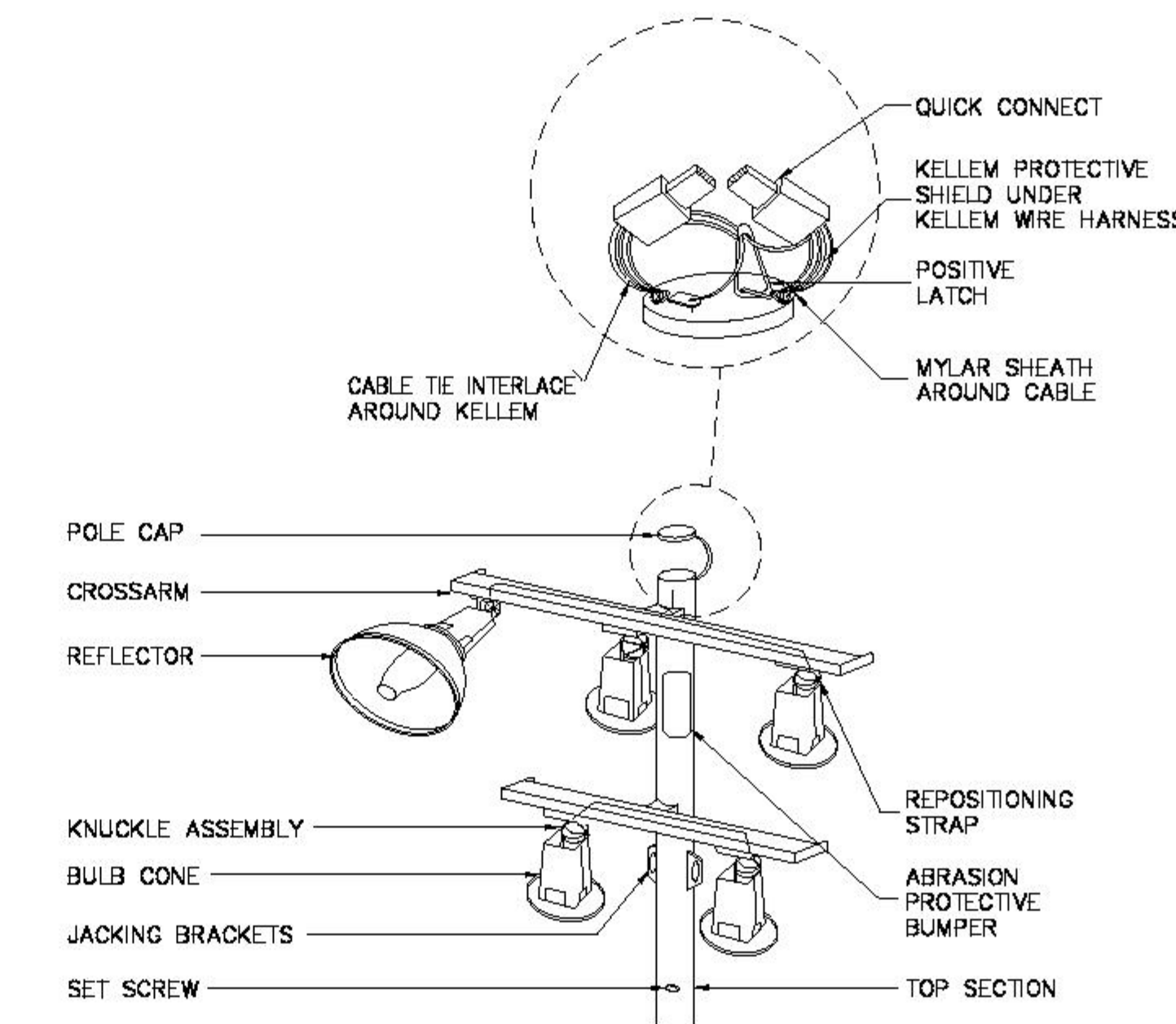
1
E4A



REF. MUSCO SHEETS FOR ADDITIONAL INFO.

BOTTOM STEEL SECTION DETAIL
NO SCALE

2
E4A

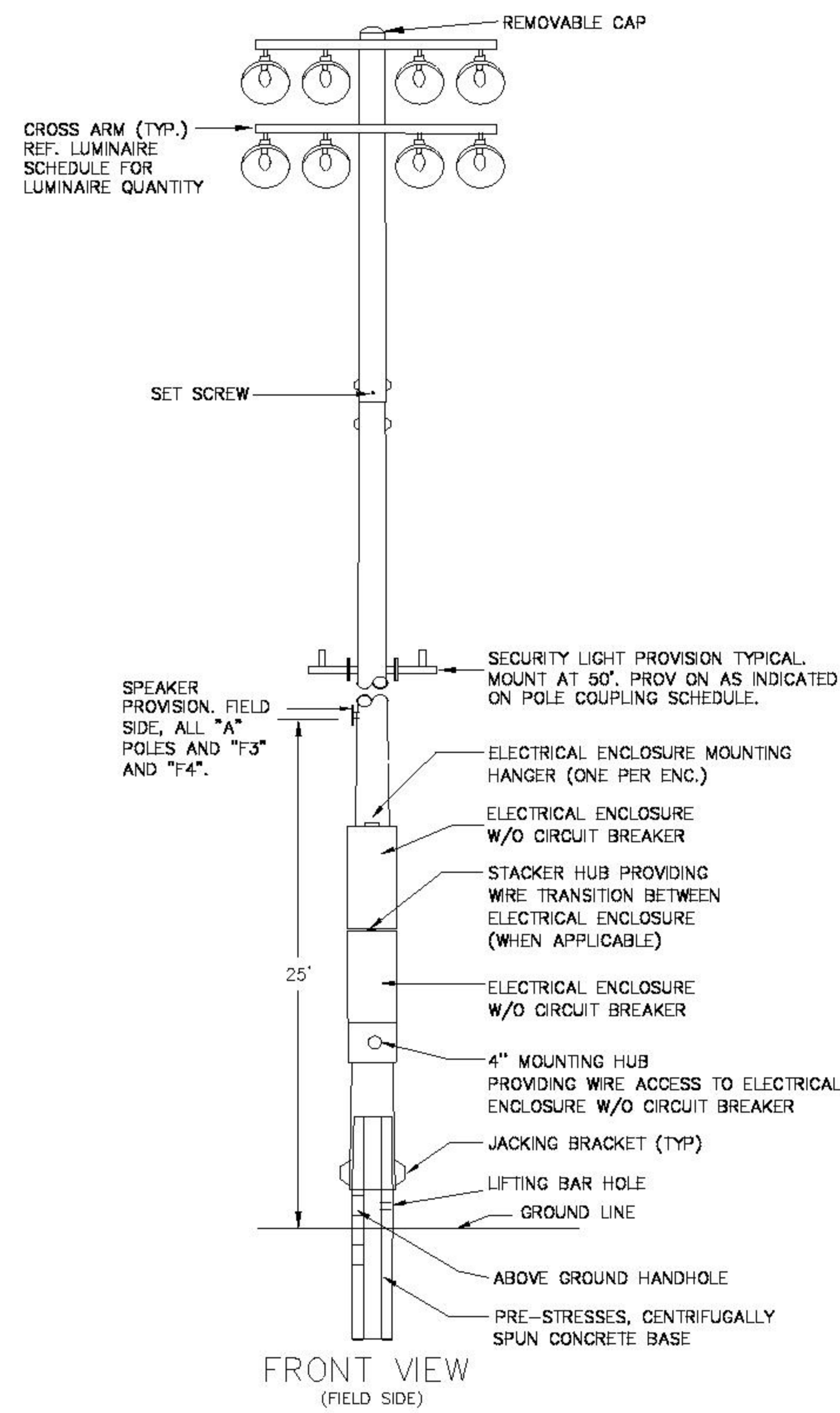


REF. MUSCO SHEETS FOR ADDITIONAL INFO.

TYP. POLE WIRING SCHEMATIC
NO SCALE

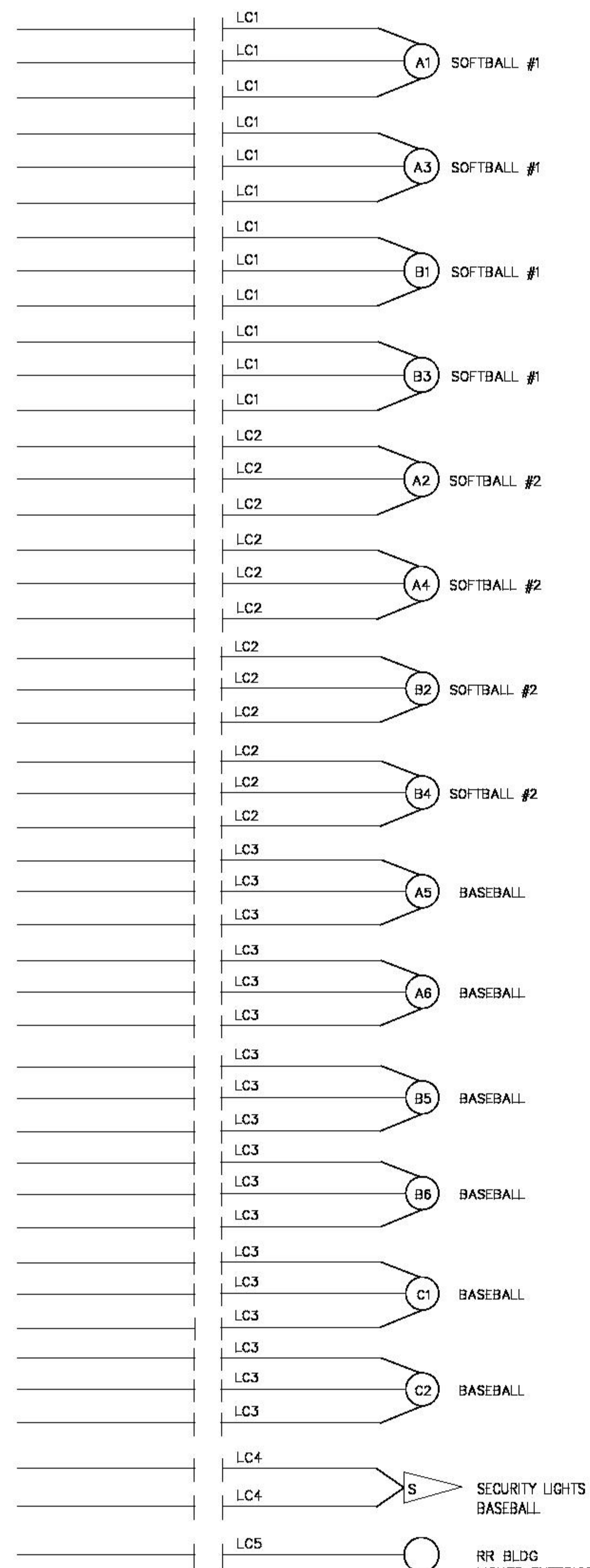
3
E4A

- NOTES:**
1. LIGHT STANDARDS REQUIRE A SEPARATE PERMIT
 2. ALL SIGNS REQUIRE SEPARATE PERMITS AND APPROVALS



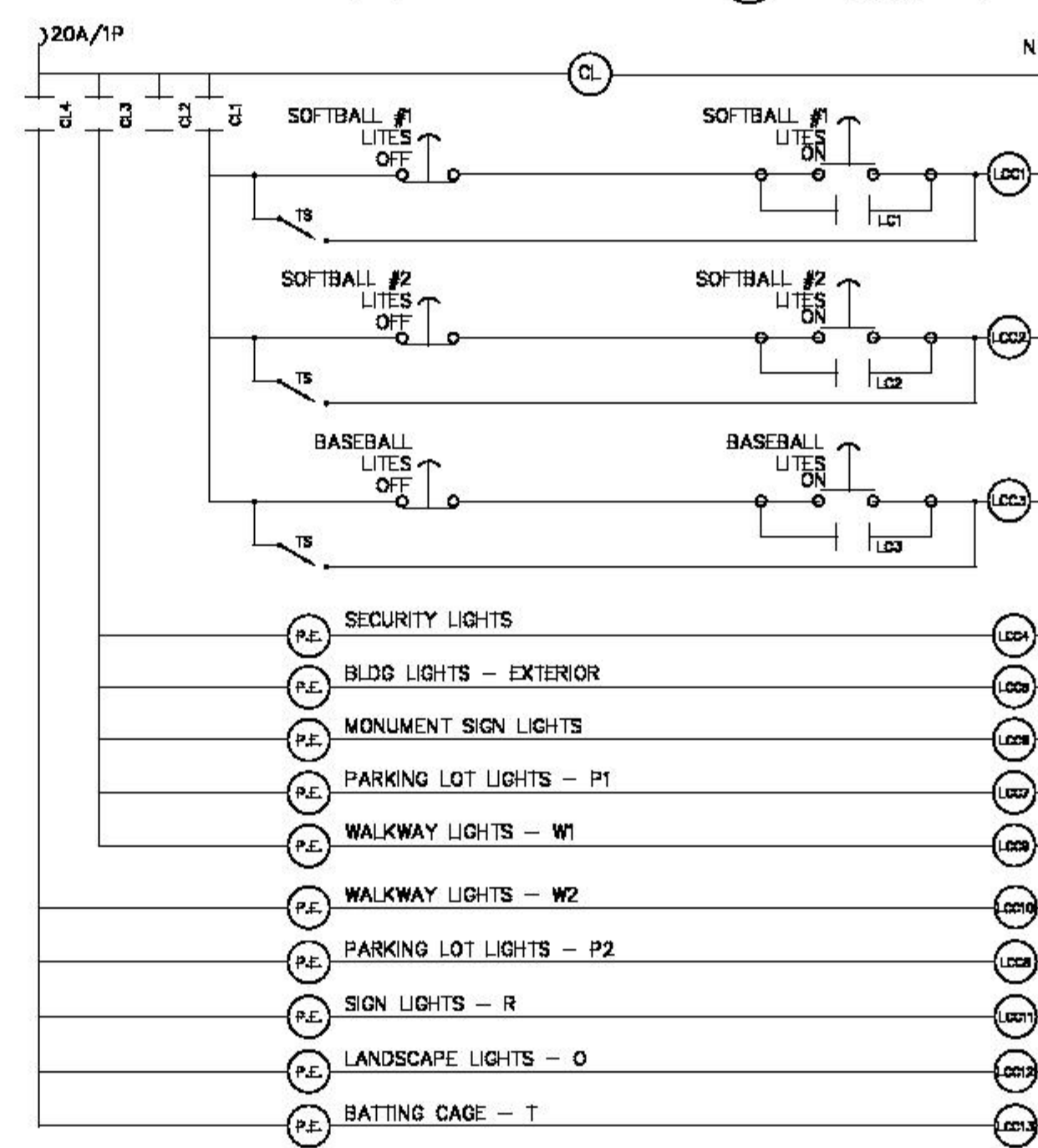
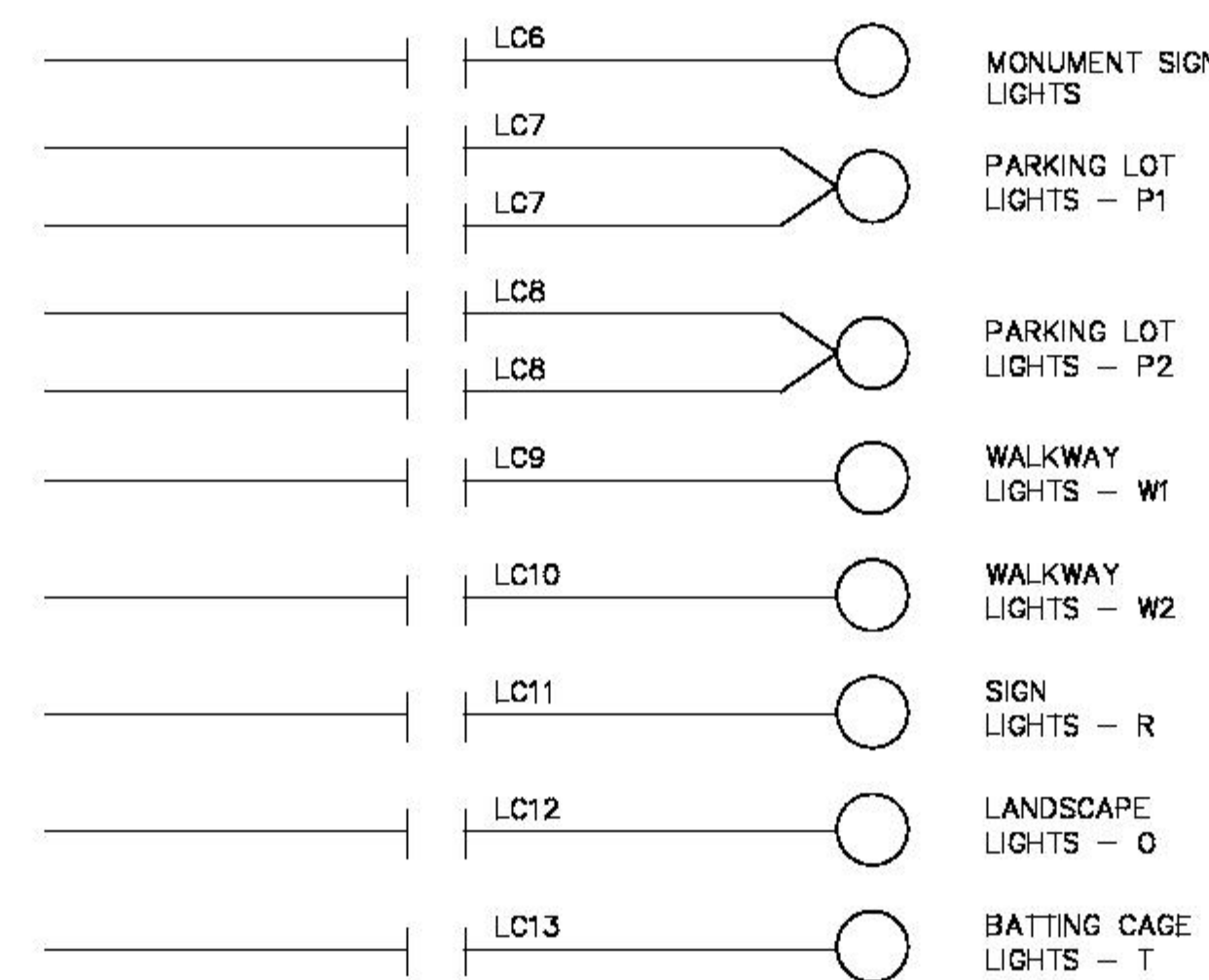
LIGHT STRUCTURE SYSTEM DETAIL
NO SCALE

4
E4A



LIGHTING CONTROL DIAGRAM - SERVICE #2
NO SCALE

5
E4A



- NOTES:**
1. ALL CONTROL WIRING TO BE #12THWN COPPER IN 1/2" C WHERE EXPOSED.
 2. RATING OF CONTACTORS TO MATCH CIRCUIT BREAKERS.
 3. MUSCO WILL FURNISH AND INSTALL MUSCO CONTROL LINK AND LIGHTING CONTACTORS. E.G. IS TO PROVIDE PUSHBUTTONS AND ALL OTHER CONTROLS SHOWN ON THIS DETAIL. PUSHBUTTONS TO BE MOUNTED ON SURFACE OF ENCLOSURE SEPARATE FROM LIVE EXPOSED ELECTRICAL PARTS. MUSCO CONTROL LINK TO BE LOCATED IN ELECTRICAL ROOM ADJACENT TO SWITCHGEAR.
 4. E.G. IS TO FURNISH, INSTALL AND LABEL, ON & OFF PUSH BUTTONS AND TEST SWITCHES (T/S). TEST SWITCH TO BE WEATHER PROOF SNAP SWITCH. THIS CONTROL EQUIPMENT IS TO BE MOUNTED INSIDE OF PROPOSED MUSCO LIGHTING CONTROL ENCLOSURE ADJACENT TO SWITCHGEAR.
 5. E.G. IS TO PROVIDE ADDITIONAL (6) SPARE 30A LIGHTING CONTACTORS.
- SYMBOLS:**
- LC MUSCO CONTROL LINK.
 - LC6 LIGHTING CONTACTOR COIL.
 - LC1 LIGHTING CONTACT CONTROLLED BY LCC.
 - SNAP SWITCH LABELED AND MOUNTED IN CONTROL ENCLOSURE.
 - OFF PUSH BUTTON MOMENTARY CONTACT. - REMOTE
 - ON PUSH BUTTON MOMENTARY CONTACT. - REMOTE

GENERAL NOTES:

GENERAL
ALL CONSTRUCTION AND WORKMANSHIP SHALL CONFORM TO THE CALIFORNIA CODE 2007 EDITION, (CBC, GEC, CFC, CMC, CPC, ENERGY) S.C. CODES & ORDINANCES.
WIND: 85 MPH (EXPOSURE C)
REFERENCE POLE LOCATION DRAWING FOR ACTUAL POLE PLACEMENT AND SITE LOCATION.
THE CONTRACTOR IS SOLELY RESPONSIBLE FOR ALL CONSTRUCTION PROCEDURES AND SAFETY CONDITIONS AT THE JOB SITE.

SOIL DESIGN PARAMETERS
ALLOWABLE END BEARING SOIL PRESSURE 1,000 PSF
ALLOWABLE LATERAL PASSIVE SOIL BEARING PRESSURE: 267 PSF.
REFERENCE CHAPTER 18, SECTION 1805.7 AND TABLE 1804.2 OF THE 2007 EDITION OF THE CALIFORNIA BUILDING CODE.
DESIGN SOIL PARAMETERS ARE AS NOTED.

A GEOTECHNICAL ENGINEER SHALL BE AVAILABLE AT THE TIME OF THE FOUNDATION INSTALLATION TO VERIFY THE SOIL DESIGN PARAMETERS AND TO PROVIDE ASSISTANCE IF ANY PROBLEMS ARISE IN FOUNDATION INSTALLATION. CITY WILL PAY FEE FOR GEOTECHNICAL ENGINEER.

ENCOUNTERING SOIL FORMATIONS THAT WILL REQUIRE SPECIAL DESIGN CONSIDERATIONS OR EXCAVATION PROCEDURES MAY EXIST. POLE FOUNDATIONS MAY NEED TO BE REANALYZED ACCORDING TO THE SOIL CONDITIONS THAT EXIST.

IF ANY DISCREPANCIES OR INCONSISTENCIES ARISE NOTIFY THE ENGINEER OF SUCH DISCREPANCIES. FOUNDATIONS WILL THEN BE REVISED ACCORDINGLY.

ALL PIERS AND CONCRETE BACKFILL MUST BE ON AND AGAINST FIRM, UNDISTURBED SOIL.

ALL EXCAVATIONS MUST BE FREE OF LOOSE SOIL AND DEBRIS PRIOR TO FOUNDATION INSTALLATION AND PLACEMENT OF CONCRETE BACK FILL. CASING MAY BE REQUIRED IF CAVING OCCURS.

ALL EXCAVATIONS MUST BE FREE OF WATER OR CONCRETE SHALL BE PLACED WITH A TREMIE PIPE IN ACCORDANCE WITH ACI STANDARD 304.

CONCRETE BACKFILL
CONCRETE BACKFILL SHALL HAVE A MINIMUM ULTIMATE COMPRESSIVE STRENGTH AT 28 DAYS OF 4,500 PSI. W/C = 0.45 MAX.
USE TYPE V PORTLAND CEMENT OR AS RECOMMENDED BY THE GEOTECHNICAL ENGINEER.
MIX IN CONFORMANCE WITH ASTM C-94. (1" MAX AGG. SIZE)
AGGREGATES PER ASTM C-33.

PLACE CONCRETE IMMEDIATELY AFTER COMPLETION OF EXCAVATION. NO EXCAVATIONS SHALL BE LEFT UNPROTECTED OR OPEN OVERNIGHT.

CONCRETE SHALL BE PLACED IN ONE CONTINUOUS OPERATION (NO CONSTRUCTION JOINT) WITH SPECIAL EQUIPMENT WITH A MAXIMUM FREE FALL OF 5 FT TO PREVENT CONCRETE FROM STRIKING THE SIDES OF THE EXCAVATION. VIBRATE TOP 5 FT.

CONCRETE BACKFILL SHALL ATTAIN A MINIMUM STRENGTH OF 2,000 PSI PRIOR TO POLE INSTALLATION.

MISCELLANEOUS
FIXTURES MUST BE LOCATED TO MAINTAIN 10' MINIMUM HORIZONTAL CLEARANCE FROM ANY OBSTRUCTION.

POLES FIXTURES, PRECAST BASES, ELECTRICAL ITEMS, PLATFORMS, SPECIFICATIONS, AND INSTALLATION PER MUSCO LIGHTING, INC.

FIGURE: EPA - 4.0, WEIGHT - 25 LBS (PER MUSCO LIGHTING, INC.)

STEEL POLE
STEEL POLE SECTIONS CONFORM TO THE "STANDARD SPECIFICATION FOR STRUCTURAL SUPPORTS FOR HIGHWAY SIGNS, LUMINAIRES AND TRAFFIC SIGNS", 2001 EDITION, WITH INTERIM REVISIONS: AMERICAN ASSOCIATION OF STATE HIGHWAY AND TRANSPORTATION OFFICIALS.

ALL STEEL CONFORMS TO REFERENCED ASTM SPECIFICATION.

ALL WELDING CONFORMS WITH AWS D1.1 SPECIFICATION FOR G.M.A.W. FILLET UTILIZING E70S-X FILLER METAL. G.M.A.W. PROCEDURE CONFORMS TO AWS A5.18.

POLE SECTIONS HOT DIPPED GALVANIZED TO ASTM A123-05 STANDARDS.

ALL MISC STRUCTURAL STEEL ITEMS CONFORM TO THE STEEL CONSTRUCTION MANUAL-ASD, 9TH EDITION, AMERICAN INSTITUTE OF STEEL CONSTRUCTION.

PRECAST BASE
PRECAST POLE BASE CONFORMS TO BUILDING CODE REQUIREMENTS FOR REINFORCED CONCRETE, ACI 318/318R-05, AMERICAN CONCRETE INSTITUTE.

POLE FOUNDATION SCHEDULE						
LUMINAIRE STYLE & LOCATION	FIXT MARK	MOMENT (M) FT - LBS	SHEAR (V) LBS	VERTICAL (F) LBS	DIAMETER INCH	EMBEDMENT LENGTH
S1,S2,S5,S6	*--	*--	*--	*--	*--	*--
S3,S4	*--	*--	*--	*--	*--	*--
S7,S8,S13,S14	*--	*--	*--	*--	*--	*--
S9,S10,S11,S12	*--	*--	*--	*--	*--	*--
A1,A2,A3,A4,A5,A6	*--	*--	*--	*--	*--	*--
B1,B2,B3,B4	*--	*--	*--	*--	*--	*--
B5,B6	*--	*--	*--	*--	*--	*--
C1,C2	*--	*--	*--	*--	*--	*--
F1,F2,F3,F4	*--	*--	*--	*--	*--	*--

*NOTES: REFERENCE MUSCO SUBMITTAL PACKAGE - MUSCO WILL PROVIDE POLE CALCULATIONS ON SEPARATE PERMIT PACKAGE.

CITY OF SAN CLEMENTE
Department of Beaches, Parks & Recreation
AVENIDA VISTA HERMOSA / AVENIDA LA PATA PARK (PHASE-1B)
SPORTS AREA POLE DETAILS

APPROVED BY: [Signature] DATE: 10/26/08
REVISION: [Signature] DATE: 10/26/08
NO. #1 DESCRIPTION: ADDED RR BUILDING TO SET

DESIGNED BY: [Signature] DATE: 02/17/08
DRAWN BY: [Signature] DATE: 02/17/08
CHECKED BY: [Signature] DATE: 02/17/08
UNDER THE SUPERVISION OF: [Signature] DATE: 10/16/2008
JUAN A. ARAUJO EE 16537

PLANS PREPARED BY: Dream Engineering Inc. Consulting Electrical Engineers

1500-D-02-13
DREAM ENGINEERING INC.
1500 DOWEN DRIVE
VICTORVILLE, CA 92392
TEL: 760-341-0997
FAX: 760-341-0484
WWW.DREAMENGINEERING.COM

Sheet 113 of 178
AS SHOWN
E-4A
Drawing Number: E-4A
Sheet Number: 113 of 178